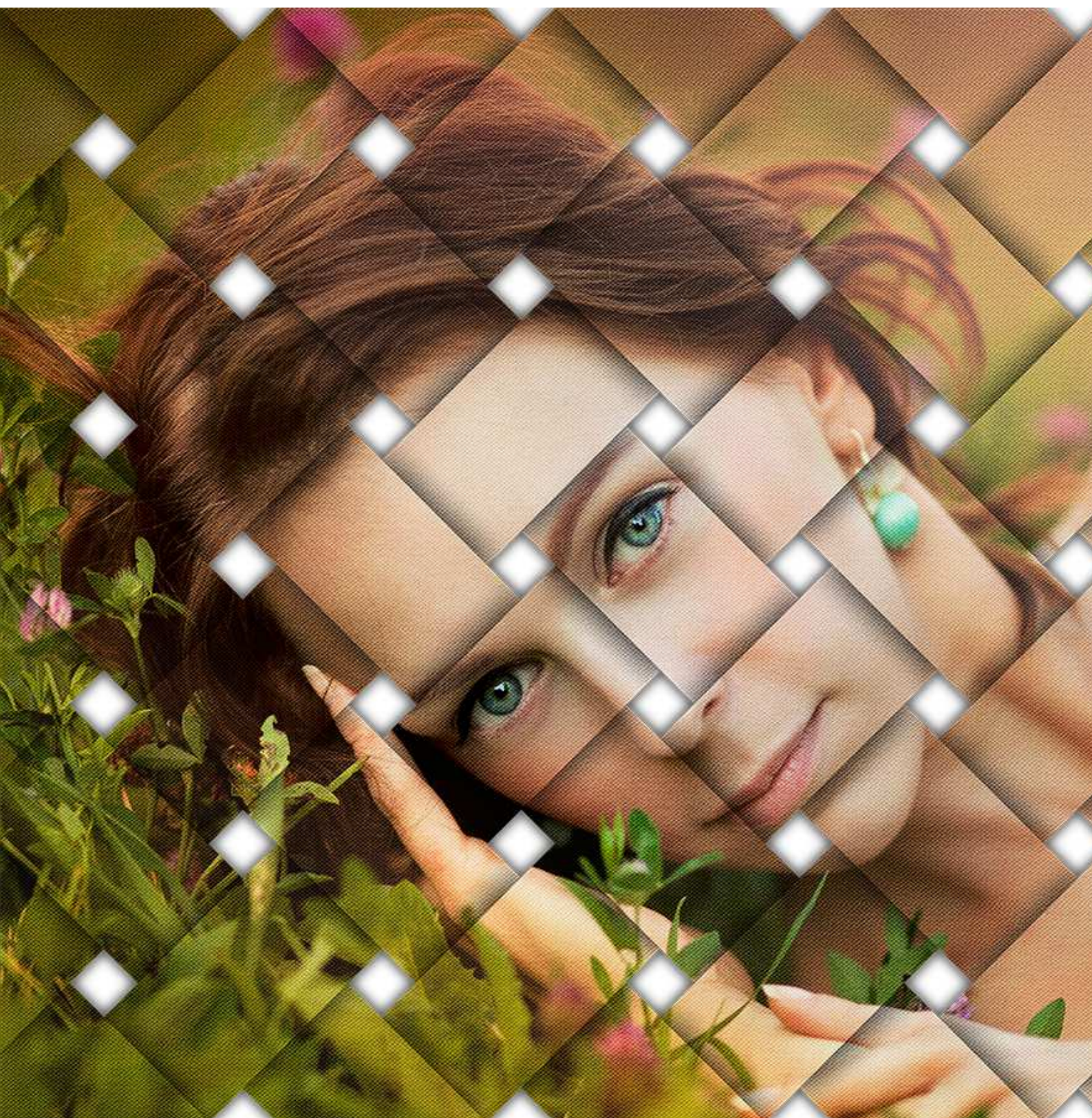


Using the Interweaving Photo Strips actions

For Adobe® Photoshop® CC, CS6, CS5, CS4, and CS3



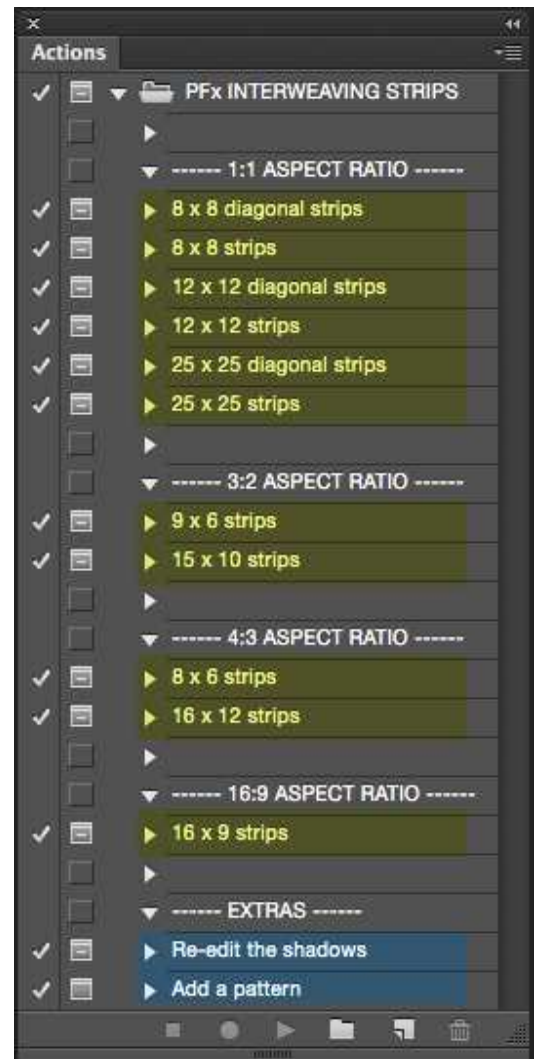
1. Choosing the right images

Some images produce better results when processed with these actions. More suitable images are those with more mid-tones and highlights and less areas with shadows.

2. The set of actions

The core actions are arranged into four groups, according to the aspect ratio of the final image they produce (1:1, 3:2, 4:3, and 16:9). These four groups are highlighted here in yellow:

There is a fifth group called “Extras” (highlighted in blue color). Its actions let you re-adjust the shadows or add a pattern overlay to the strips.



3. Using the actions

Load an image and then run one of the core actions.

3.1 The vector shape

The action begins with showing you a vector shape, which represents the area of the final image.

You may:

- Drag a **corner** handle **diagonally** inwards or outwards to resize the shape **evenly**.
- Drag to reposition the shape
- Rotate the shape to preference

While re-arranging, make sure the entire shape lies always within the image. Don't include any areas outside the image.

The shape contains a number of small boxes. These marks are visual aids, which show you the areas that will become the **gaps** between the interweaving strips. This is very handy since you know in advance which pixels won't appear in the final image:



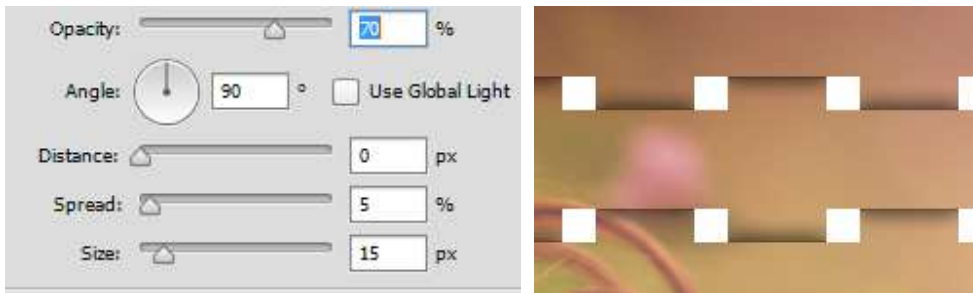
When finished with the shape, double click to confirm your changes and move on.

3.2 Adjusting the shadows

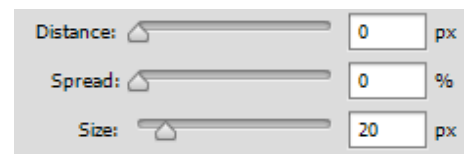
The actions work pretty much straightforward, with a few dialogue boxes requiring your involvement.

You may manipulate the shadows that are cast on the strips:

Tweak the default drop shadow settings, so that the style looks optimal on your photos. Adjust the shadow **Distance**, **Spread**, **Size** and **Opacity** to preference:



In the last step you may adjust the shadow that the strips cast on the background. Move the **Size** slider to preference:

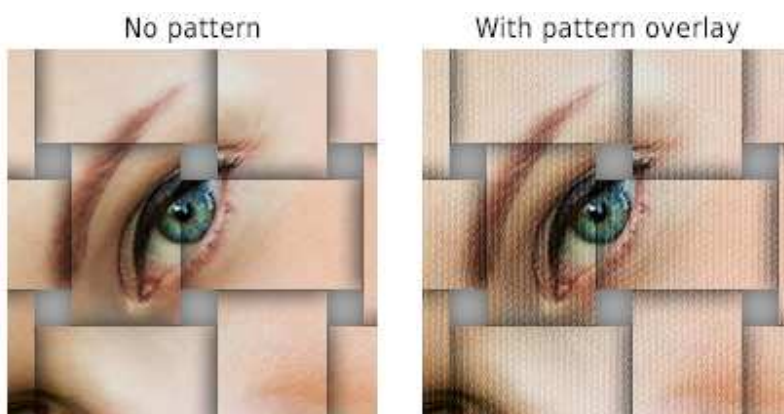


3.3 Re-editing the shadows

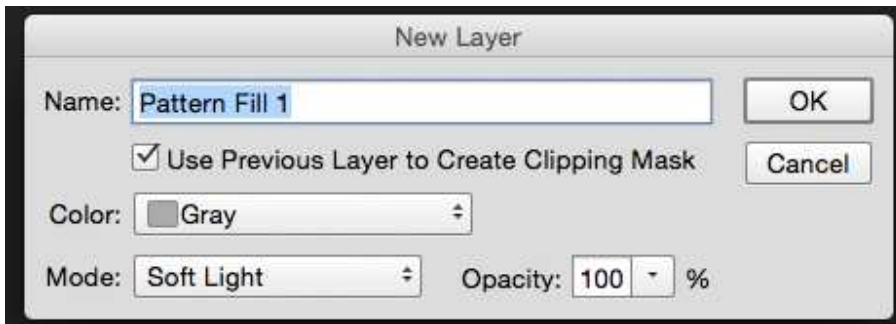
If you want to re-adjust the shadows, run the “Change drop shadow” action.

3.4 Adding a Pattern Overlay

You can make the effect more interesting by adding a pattern fill:



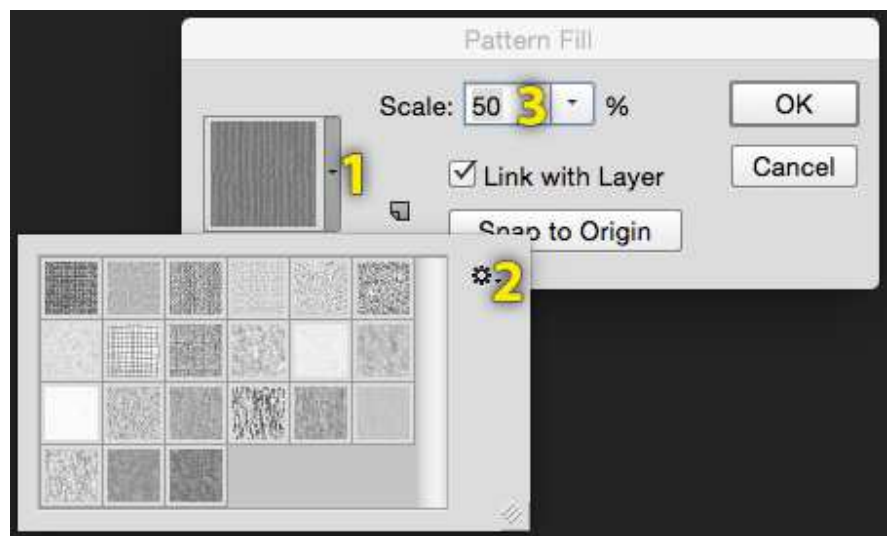
Run the “Add a Pattern” action. Click on **OK** when the **New Layer** window shows up:



The **Pattern Fill** window shows up; click on the pattern selector arrow **(1)**.

Click on the little gear button **(2)** and select one of the preset pattern sets, preferably the grayscale ones such as “**Artist Surfaces**”, the “**Artists Brushes Canvas**” or the “**Grayscale paper**” sets.

Having loaded the set, double click on a pattern to select it.



Depending on the size of the original image, you may want to change the default **Scale** percentage **(3)**. This will make the pattern overlay look better. I recommend you increase / decrease **Scale** in increments of 25% (e.g. from 100% down to 75%, 50%, 25%, or up to 150%, 225%. etc.)

When the action finishes you may change the default opacity of the “Pattern Fill” layer, or change its blending mode from the default **Soft Light**. You may experiment with different blending modes.

© Panos Efstathiadis – All rights reserved
www.PanosFX.com

The photo used in this tutorial was kindly provided by Shutterstock: <http://www.shutterstock.com/pic.mhtml?id=107466671>