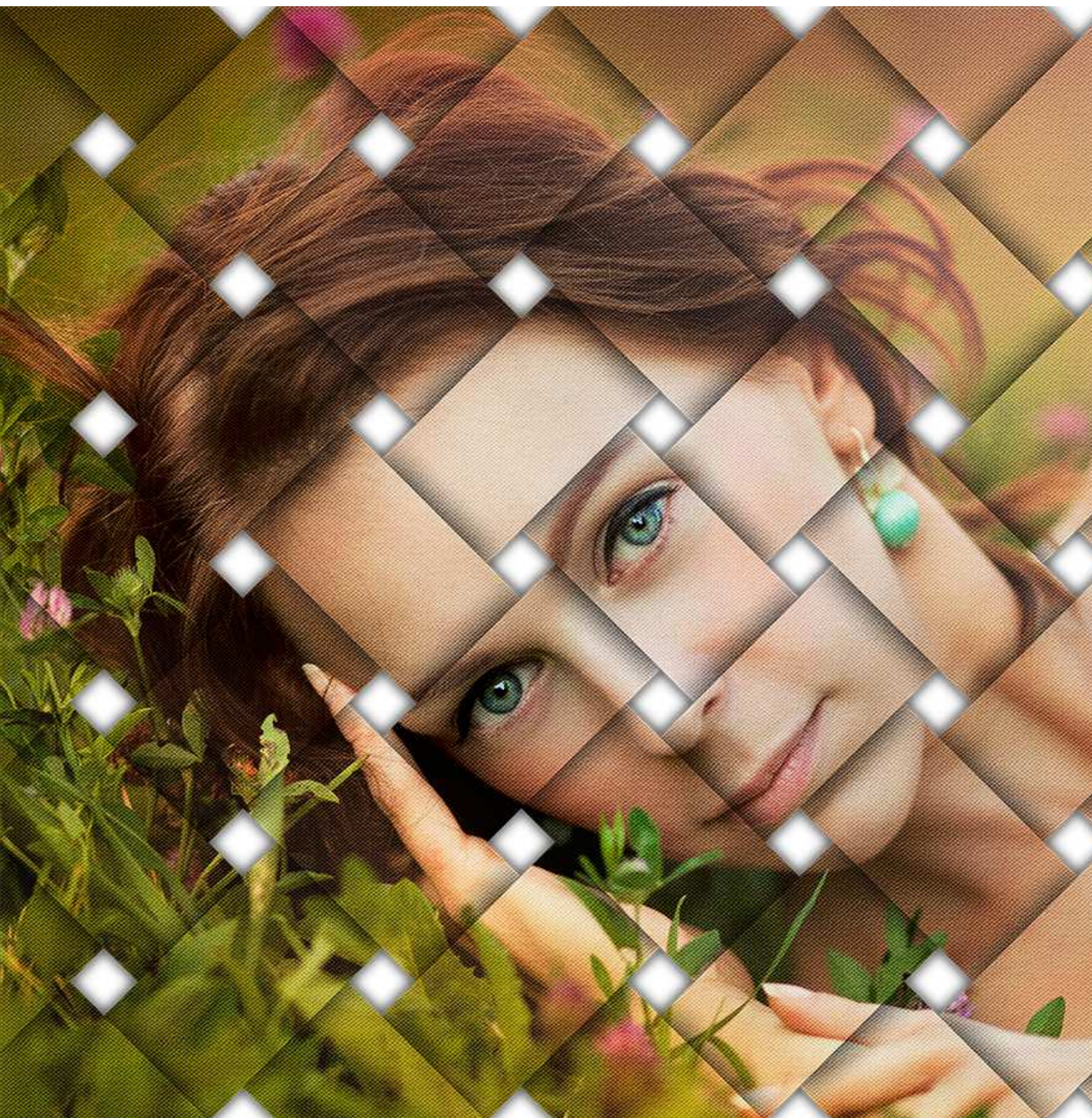


# The 'Interweaving Photo Strips' actions

For Adobe® Photoshop® Elements 15 or newer



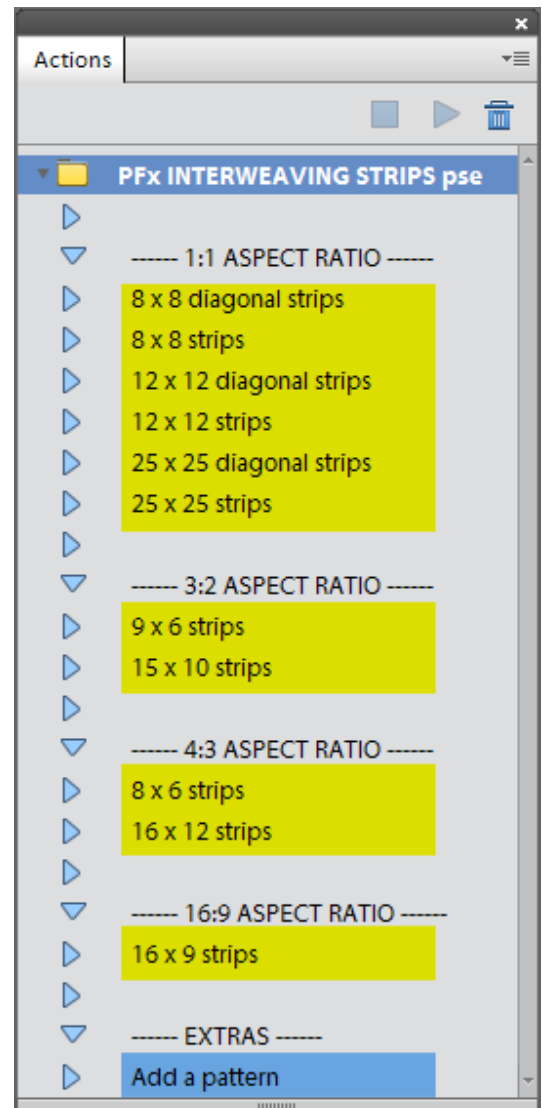
## 1. Suitable images

Some images produce better results when processed with these actions. More suitable images are those with more mid-tones and highlights and less areas with shadows.

## 2. The set of actions

The core actions are arranged into four groups, according to the aspect ratio of the final image they produce (1:1, 3:2, 4:3, and 16:9). These four groups are highlighted here in yellow:

The “Add a pattern” action (in the “Extras” group, highlighted in blue) lets you add a pattern overlay to the strips.



### 3. Using the actions

Load an image and then run one of the core actions.

#### 3.1 The vector shape

The action begins with showing you a vector shape, which represents the area of the final image.

You may:

- Drag a **corner** handle **diagonally** inwards or outwards to resize the shape **evenly**.
- Drag to reposition the shape
- Rotate the shape to preference

While re-arranging, make sure the entire shape lies always within the image. Don't include any areas outside the image.

The shape contains a number of small boxes. These marks are visual aids, which show you the areas that will become the **gaps** between the interweaving strips. This is very handy since you know in advance which pixels won't appear in the final image:



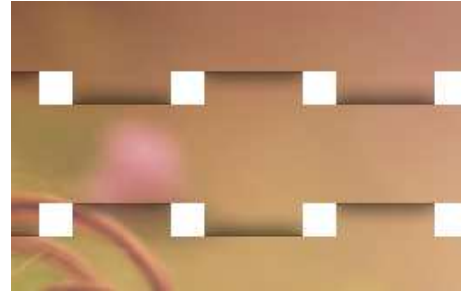
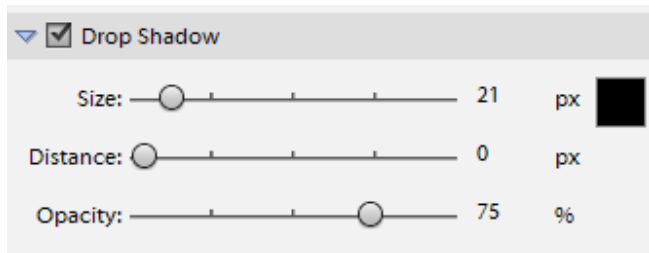
When finished with the shape, double click to confirm your changes and move on.

### 3.2 Adjusting the shadows

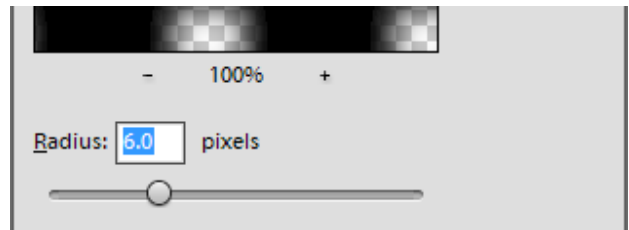
The actions work pretty much straightforward, with a few dialogue boxes requiring your involvement.

You may manipulate the shadows that are cast on the strips:

- Check the **Drop Shadow** box to expand its settings.
- Move the **Distance** slider to 0 pixels.
- Move the **Size** slider to preference:



In the last step you may adjust the shadow that the strips cast on the background. Move the **Radius** slider to preference and observe the changes on-screen. Hit **OK** to confirm your changes.

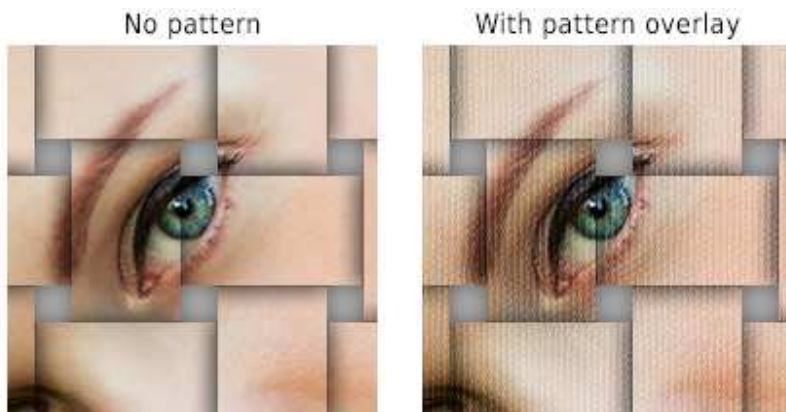


### 3.3 Re-editing the shadows

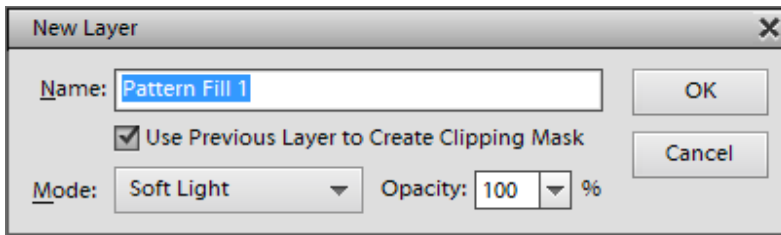
If you want to re-adjust the shadows, run the “Change drop shadow” action.

### 3.4 Adding a Pattern Overlay

You can make the effect more interesting by adding a pattern fill:



Run the “Add a Pattern” action. Click on **OK** when the **New Layer** window shows up:



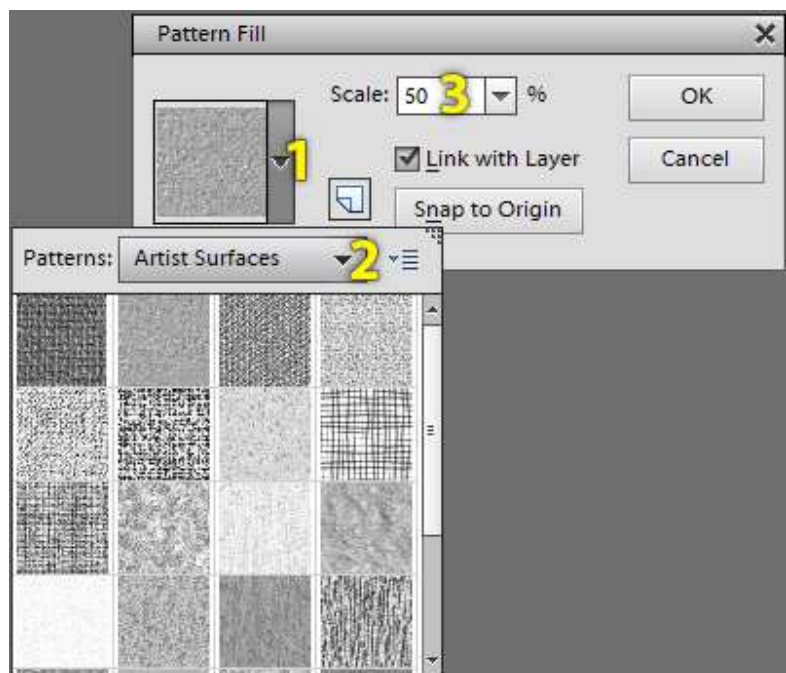
The **Pattern Fill** window shows up; click on the pattern selector arrow **(1)**.

Click on the pattern set selector **(2)** and select one of the preset pattern sets, preferably the grayscale ones such as “**Artist Surfaces**” or the “**Grayscale paper**” sets.

Having loaded the set, double click on a pattern to select it.

Depending on the size of the original image, you may want to change the default **Scale** percentage **(3)**. This will make the pattern overlay look better.

I recommend you increase / decrease **Scale** in increments of 25% (e.g. from 100% down to 75%, 50%, 25%, or up to 150%, 225%. etc.)



When the action finishes you may change the default opacity of the “Pattern Fill” layer, or change its blending mode from the default **Soft Light**. You may experiment with different blending modes.